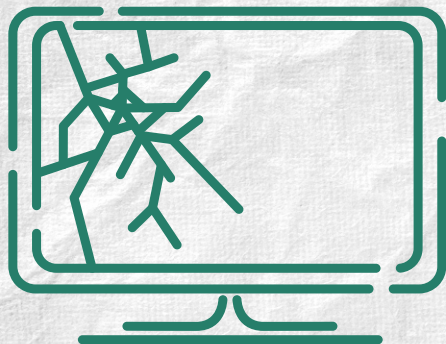
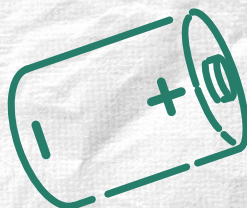


#ECO POUKŁADANI

ALL YOU NEED TO KNOW ABOUT
CIVIC AMENITY SITES





Civic Amenity Sites, so called **CAS (Polish: PSZOK)**, which are located in the area of Warsaw accept segregated municipal waste from your households free of charge. The waste collected at CAS facilities is handed over to municipal waste treatment facilities in accordance with applicable laws.

There are two CAS facilities operating in the city:

CAS for right-bank Warsaw located at
1 Płytowa St., 03-046 Warsaw
run by a consortium of companies
PARTNER Sp. z o.o. and PARTNER Dariusz Apelski;
Phone: 22 811 08 53;
www.partner-apelski.pl/pszok.php

CAS for left-bank Warsaw located at
1 Zawodzie St., 02-981 Warsaw
run by P.P.H.U. LEKARO Jolanta Zagórska;
Phone: 22 185 52 51;
<http://www.lekaro.pl/oferta/pszok>

For more information go to the City of Warsaw website:
www.czysta.um.warszawa.pl



What can we bring to CAS?

- paper and cardboard packaging;
 - metal and plastic packaging (e.g. beverage and food cans, PET bottles, cooking oil containers);
 - glass packaging (e.g. empty bottles, jars, glass cosmetics packaging);
 - engine oil, detergent, and crop protection product containers;
 - pressurised aerosol containers;
 - used vehicle or household fire extinguishers or extinguishers past their expiry date;
 - motor vehicle, motorcycle or bicycle tyres;
 - concrete, brick rubble, ceramics, tiles, being municipal waste from renovation works carried out independently;
 - glass (window and door colourless glazing) and mirrors;
 - clothing and textiles (blankets, curtains, tablecloths etc.);
 - textile packaging (e.g. jute bags);
 - solvents, acids and alkali (caustic substances);
 - photochemicals;
 - crop protection products;
 - cooking oil and edible fats;
 - used engine oil or engine oil past its expiry date;
 - paint, paint packaging, including paint packaging containing dangerous substances;
 - glue and glue packaging containing dangerous substances;
 - printer ink, toners;
 - adhesives and resins, including adhesives and resins containing dangerous substances;
 - detergents (in the manufacturer's unit packaging);
 - wood containing dangerous substances;
 - wood i.e. wooden boxes, boards etc.;
 - flower pots, buckets, window boxes, bowls, garden furniture etc.;
 - bicycle frames, bicycle wheels, hangers, equipment casing, door handles, metal parts, etc.;
 - fluorescent tubes or lamps, energy-saving lamps, mercury-in-glass thermometers;
-



- cooling and air-conditioning devices, e.g. fridges, refrigerators, household air-conditioning units;
- waste electrical and electronic equipment e.g. radio receivers and television sets containing mercury lamps, dishwashers, gas and electric cookers, washing machines, vacuum cleaners, CD and DVD players;
- accumulators and batteries;
- medications past their expiry date;
- bulky waste;
- biodegradable waste (e.g. grass and leaves);
- and any other separately collected municipal waste fractions.

What waste is not accepted at CAS?

- waste other than municipal waste;
- materials containing asbestos;
- tar paper and construction polystyrene;
- waste in packaging which is damaged to an extent which causes leakage of the substances inside the packaging;
- waste in quantities indicating that the waste has been generated in the course of business activities.

Please remember that:

CAS and Mobile CAS facilities are only dedicated to municipal waste. The removal of waste containing asbestos is governed by special legal regulations.

IT IS NOT ALLOWED TO BRING TO CAS ANY WASTE FROM BUSINESS ACTIVITIES TO WHICH SEPARATE WASTE MANAGEMENT LAWS ARE APPLIED.

DANGEROUS WASTE WILL ONLY BE ACCEPTED IN ORIGINAL PACKAGING.



Mobile Civic Amenity Sites, so called MCAS (Polish: MPSZOK), are specially adapted and labelled vehicles intended for the collection of municipal waste, including dangerous waste, from households free of charge.

MCAS operate in the Warsaw area, based on a kerbside collection round system, **two times a week (Wednesdays between 11:00 a.m. and 6:30 p.m., and on Saturdays between 10:00 a.m. and 5:30 p.m.)**, stopping at indicated times in designated locations within the city area, in accordance with the schedule which can be found on the following websites:

- www.czysta.um.warszawa.pl
- www.partner-apelski.pl/pszok.php
- <http://www.lekaro.pl/oferta/pszok>

What can we bring to the MCAS?

- oil containers, other than cooking oil containers, detergent, and crop protection product containers;
- pressurised aerosol containers;
- used vehicle or household fire extinguishers or extinguishers past their expiry date;
- solvents, acids and alkali (caustic substances);
- photochemicals;
- crop protection products e.g. herbicides;
- fluorescent tubes or lamps, energy-saving lamps, mercury-in-glass thermometers;
- cooking oil and edible fats;
- used engine oil or engine oil past its expiry date;
- paint, paint packaging;
- printer ink, toners;
- glue, glue packaging;
- adhesives and resins;
- detergents;
- small waste electrical and electronic equipment, with a size of each external dimension of no more than 25 cm;
- batteries, accumulators.

What waste is not accepted at the MCAS? MCAS does not accept:

- mixed municipal waste;
- materials containing asbestos;
- construction and demolition waste;
- large waste electrical and electronic equipment;
- bulky waste;
- waste in packaging which is damaged in an extent which causes leakage of the substances inside the packaging;
- biodegradable waste etc.

MCAS stopovers

in left-bank Warsaw districts:



	Wednesday	Saturday
BIELANY	11.00 a.m. – 12.30 p.m. Chomiczówka bus terminus (Conrada St. opposite Nos. 10B and 12)	10.00 – 11:30 a.m. 14 Wóycickiego St. (Car park – northern entrance to the Cemetery)
ŻOLIBORZ	1:00 – 2:30 p.m. 2 Kątowa St., corner of Mickiewicza St. (the lay-by in front of the garages)	12.00 – 1:30 p.m. Powązkowska St. (car park at 10A Ostrowiecka St.)
BEMOWO	3:00 – 4:30 p.m. 126 Powstańców Śląskich St. (Car park – CH BEMOWO shopping centre)	2:00 – 3:30 p.m. 70 Powstańców Śląskich St. (District Office car park)
WOLA	5:00 – 6:30 p.m. Wolski Cmentery bus terminus (Fort Wola St.)	4:00 – 5:30 p.m. 124 Górczewska St. (car park – CH Wola Park shopping centre)
URSUS	11.00 a.m. – 12:30 p.m. 3 K. Sosnkowskiego St. (a car park)	10.00 – 11.30 a.m. Czerwca 1976 Sq. No.1 (District Office car park)
WŁOCHY	1:00 – 2:30 p.m. Popularna St. corner of 184 A Jerozolimskie Ave. (a parking lay-by next to KFC Makro)	12.00 – 1:30 p.m. 244/246/248 Krakowska Ave. (parking facing Sabły St. opposite No. 21)
OCHOTA	3:00 – 4:30 p.m. Szczęśliwice bus terminus (Dickensa St., corner of Szczęśliwicka St.)	2:00 – 3:30 p.m. Korotyńskiego St. (opposite No. 34, site of former sewage collection stn)
ŚRÓDMIEŚCIE	5:00 – 6:30 p.m. 43 Nowogrodzka St. (District Office car park)	4:00 – 5:30 4A Myśliwiecka St. (a car park next to the stadium)
MOKOTÓW	11.00 a.m. – 12.30 p.m. 31 Powsińska St. (car park – CH Sadyba Best Mall)	10.00 – 11.30 a.m. 1 Błacharska St. corner of 16 Lotników Ave. (car park)
URSYNÓW	1.00 – 2.30 p.m. Bus terminus Kabaty Housing Estate (14 KEN Ave. next to Tesco)	12.00 – 1.30 p.m. Gandhi St. (a car park at Gandhi and Hirszfelda St.)
WILANÓW	3.00 – 4.30 p.m. Wilanów bus terminus Przyczółkowa / 35 Wiertnicza St.	2.00 – 3.30 p.m. 27A Przyczółkowa St. (District Office car park)
MOKOTÓW	5.00 – 6.30 p.m. J. Bytnara „Rudego” St., corner of F. Joliot–Curie St. (car park next to the open-air market)	4.00 – 5.30 p.m. 42 Boksterska St. (car park next to the store)

MCAS stopovers

in right-bank Warsaw districts:



	ŚRODA	SOBOTA
WAWER	11.00 a.m. – 12.30 p.m. 54 Włókiennicza St. (car park next to the Civil Registry Office)	10.00 – 11.30 a.m. 1 Żegańska St. (District Office car park)
WESOŁA	1.00 – 2.30 p.m. Jana Pawła II St., corner of Rumiankowa St. (car park at 240 Jana Pawła II St.)	12.00 – 1.30 p.m. 3 Raczkiewicza St. (District Office car park)
REMBERTÓW	3.00 – 4.30 p.m. Strażacka St., corner of Kordiana St. (a square near former ZGN)	2.00 – 3.30 p.m. 28 Gen. A. Chruściela “Montera” St. (District Office car park).
PRAGA- -POŁUDNIE	5.00 – 6.30 p.m. Bora-Komorowskiego St. (a car park next to “Wodnik” swimming pool)	4.00 – 5.30 p.m. 4 Teresposka St. (corner of Stanisławowska St.)
BIĄŁOŁĘKA	11.00 a.m. – 12.30 p.m. Zaułek St. (a car park next to Primary School No. 112)	10.00 – 11.30 a.m. 197 Modlińska St. (car park next to the Civil Registry Office)
	13.00 – 1.30 p.m. 44 Marywilska St. (car park – shopping centre)	
TARGÓWEK	3:00 – 4:30 p.m. Bródno-Podgrodzie bus terminus (Krasnobrodzka St., corner of Chodecka St.)	12.00 – 1.30 p.m. Tużycka St., corner of Potulicka St. (entrance from the pumping station)
		2.00 – 3.30 p.m. 20 Kondratowicza St. (transformer station next to the District Office)
PRAGA- -PÓŁNOC	5.00 – 6.30 p.m. 15 Ks. I. Kłopotowskiego St. (District Office car park)	4.00 – 5.30 p.m. Szwedzka St., corner of Stalowa St. (opposite 65 Stalowa St.)

The estimated stopover time at each of the above locations is 90 minutes

